

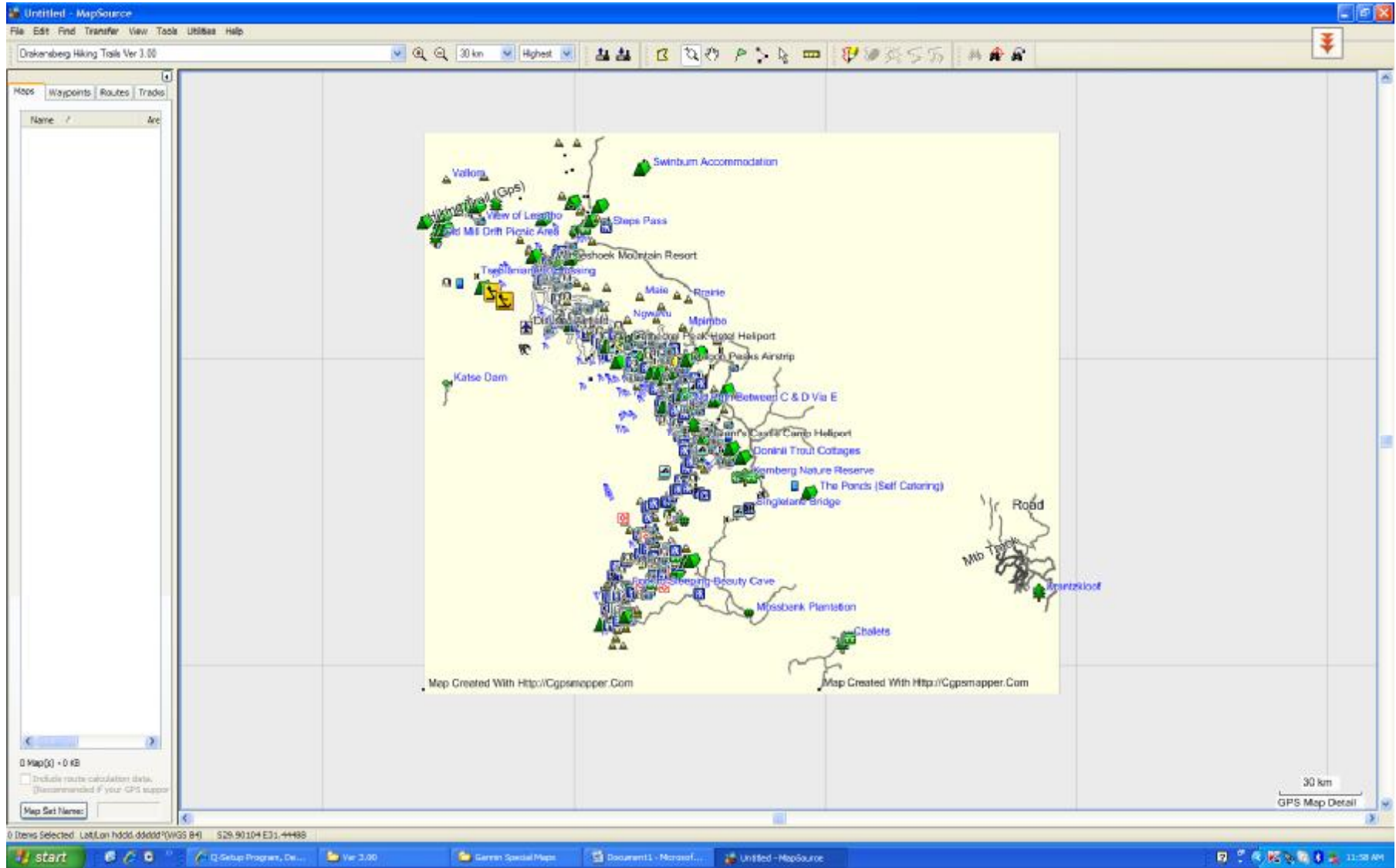
## How to install the Drakensberg Hiking map in Mapsource on your Ms Windows based PC (tested on XP, Vista and 7) and upload to your GPSr



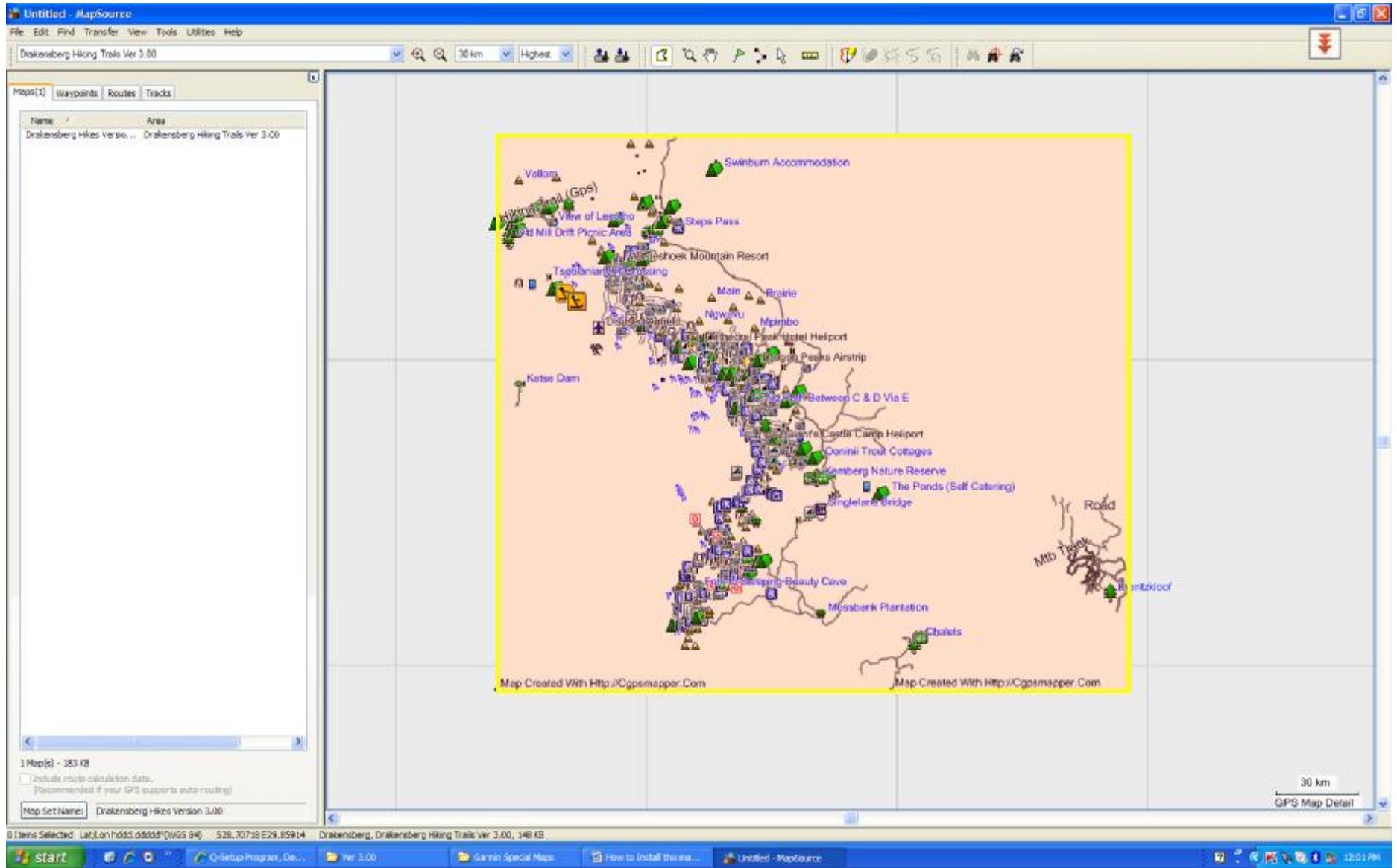
1. Unrar the compressed file Drakensberg V3.00.rar and extract the file Drakensberg V3.00.ex\_ file and rename it back to Drakensberg V3.00.exe
2. I only do this to get the executable file Drakensberg V3.00.exe passed the virus protection programs installed on most PC nowadays.
3. Now run Drakensberg V3.00.exe by double clicking on it and follow the install instructions. Please read carefully through the Licence and Install notes and always first uninstall any previous versions of this map if you have one already installed on your PC.



- Now run Mapsource and select the Drakensberg Hiking Trails Map now added to your set of installed maps in Mapsource.

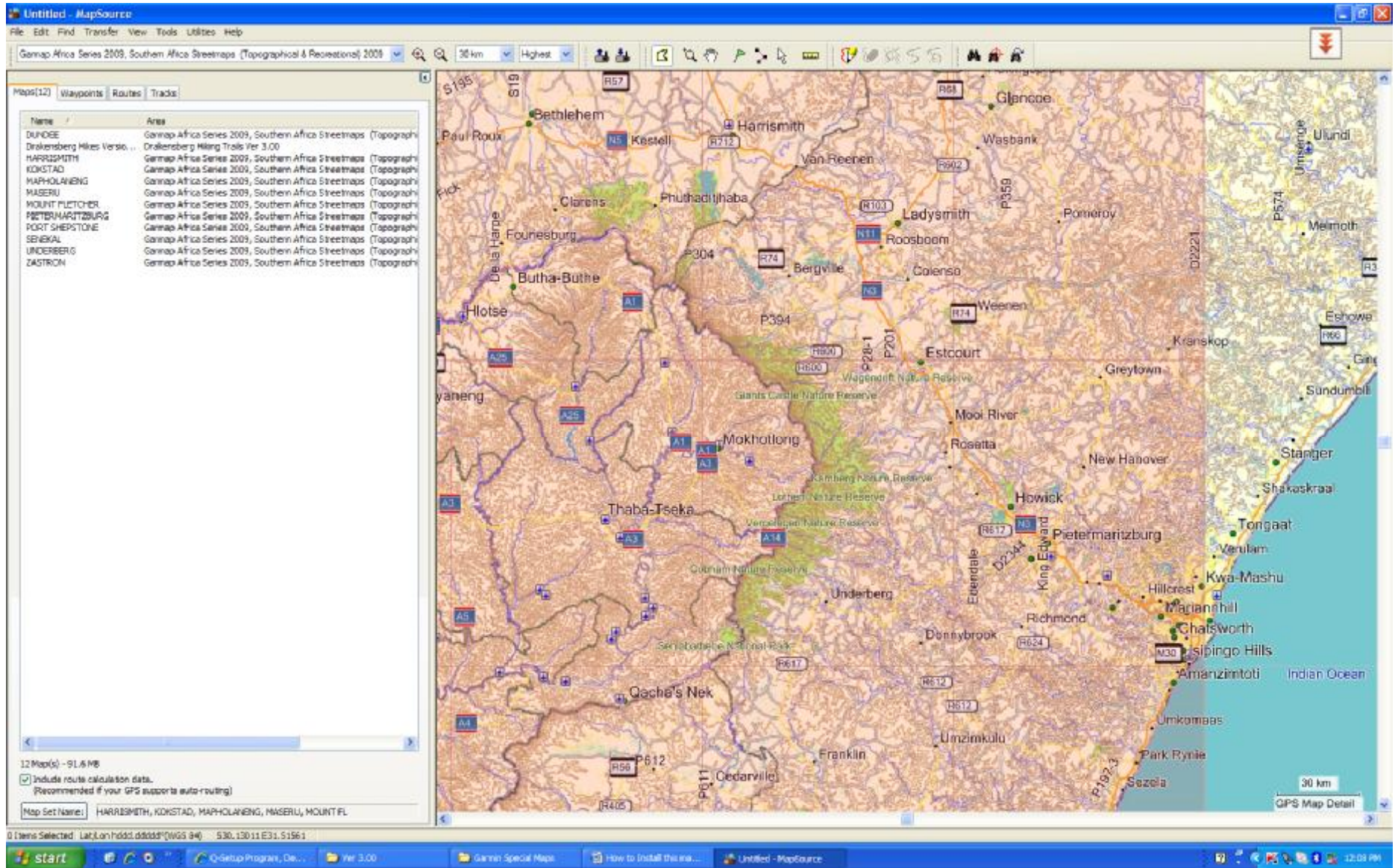


5. Select this single map tile with the Map Tool, it will go pink if selected and the map list will update to one map selected



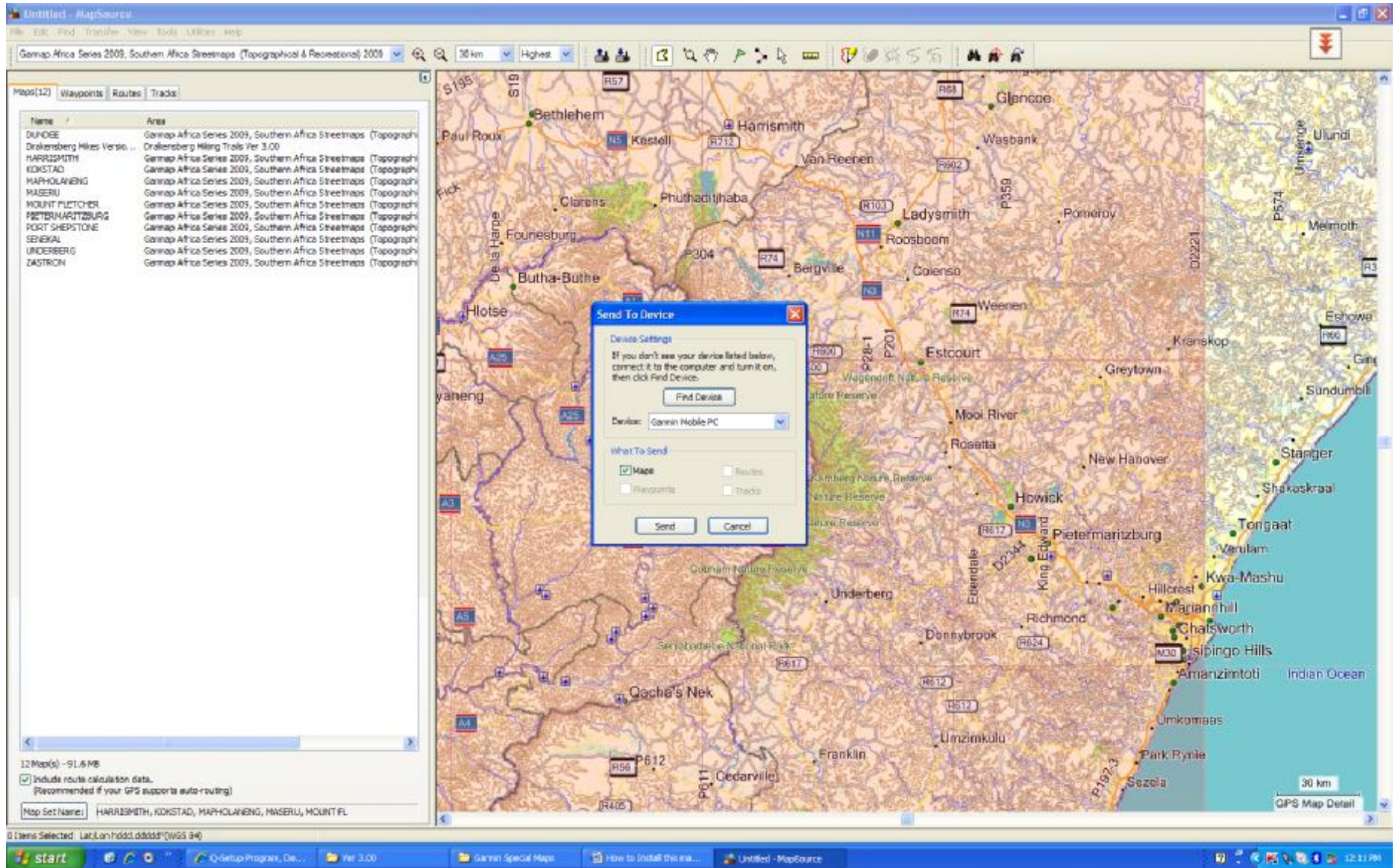


6. Change to a suitable Base Map of this area and select Map Tiles covering the same area (I use the Garmap 2009 Topo & Rec Map).



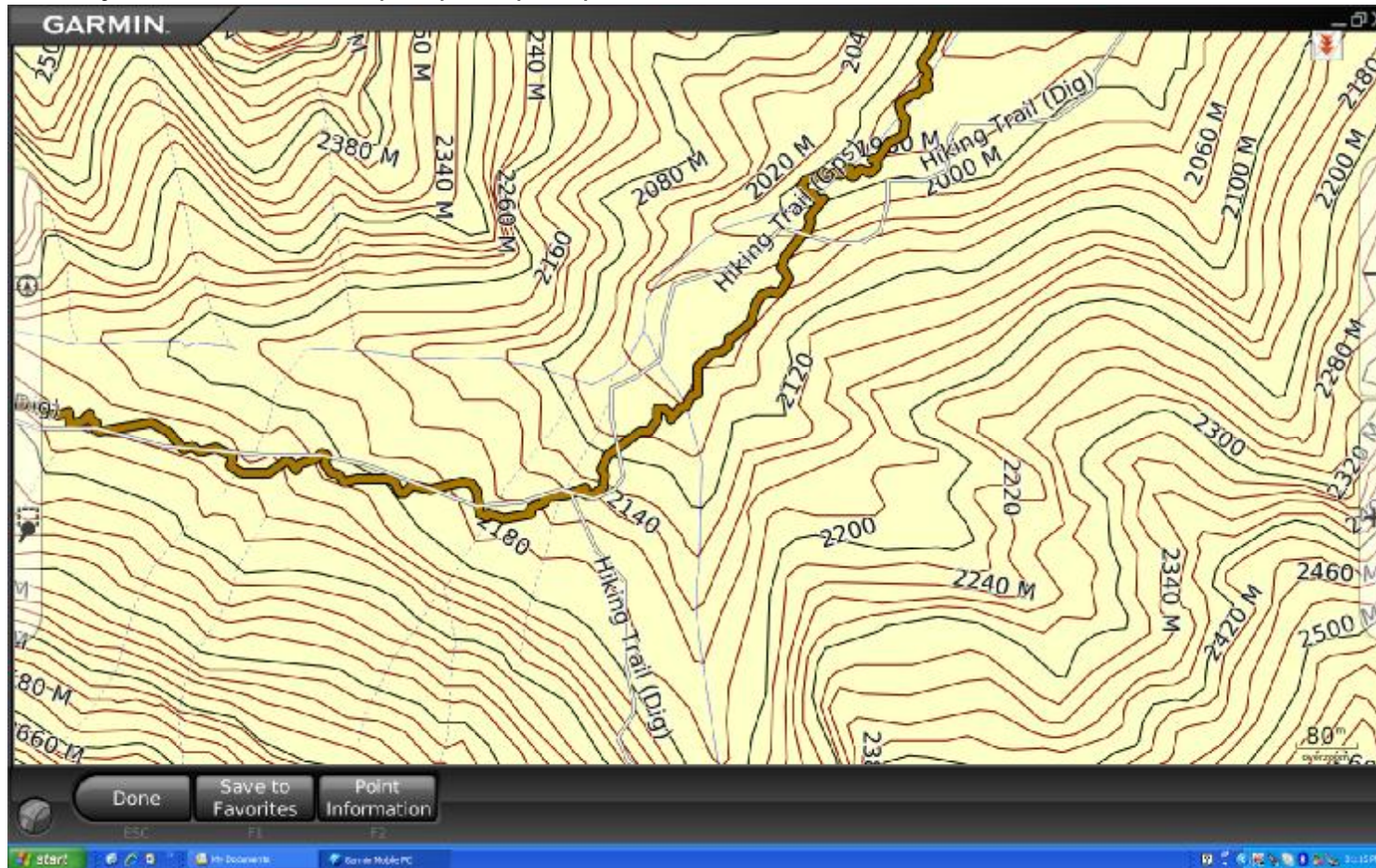


7. You are now ready to connect your GPS and send this Map selection to your GPS, Remember this will overwrite your current map set on your GPSr.



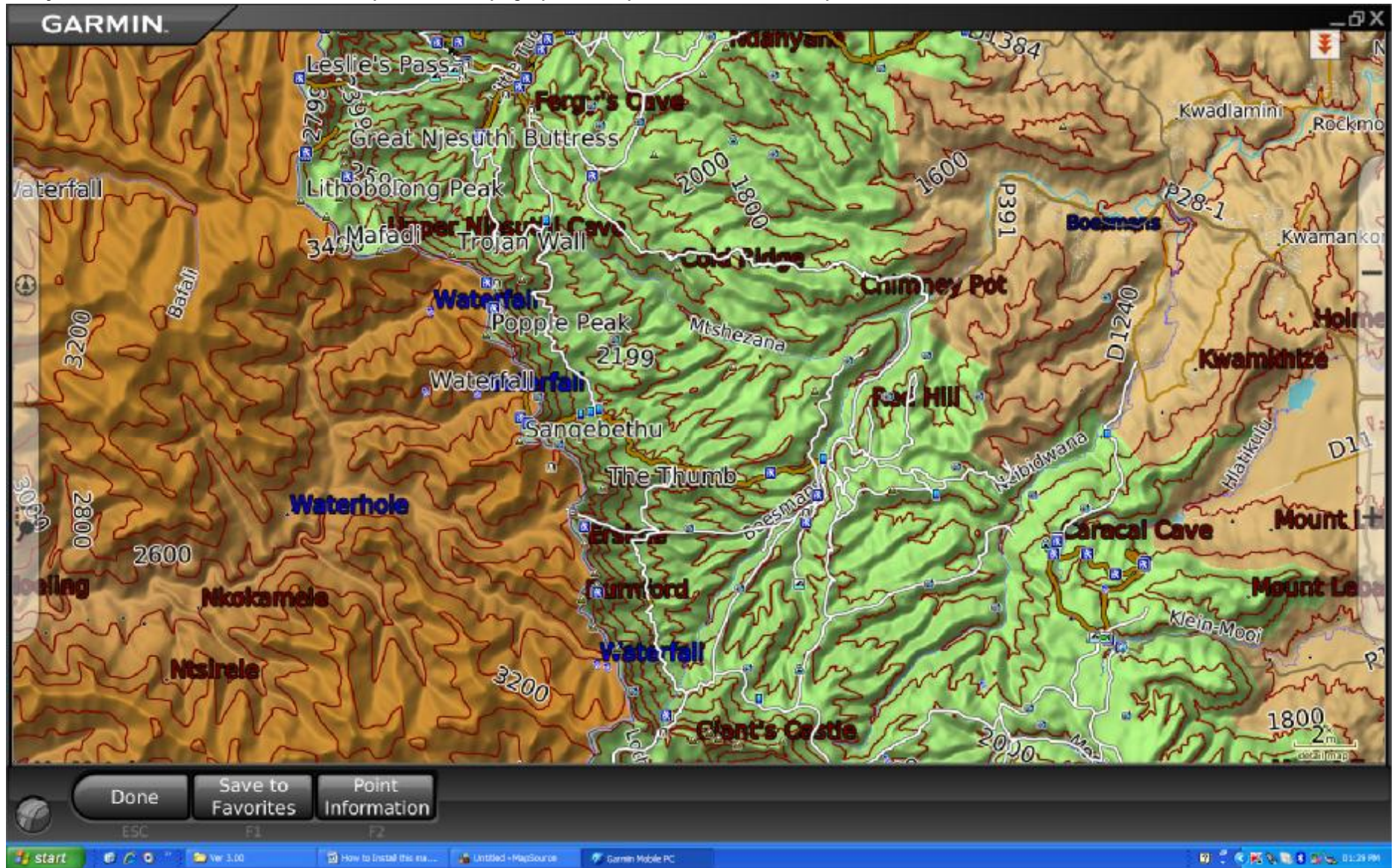


8. You are free to switch the Hiking Map layer off in your GPSr if you are not using it, remember this is a independent Transparent Map Layer, it will also not affect your auto-routing function on your base map if this is a auto-routable map like the Garmap Africa 2009 series maps. It only adds hiking trail information (not auto-routable) to these maps in installed together on your GPSr.
9. You will notice two types of hiking route data on this map, HIKING TRAIL (GPS) meaning accurate GPS captured data and not so accurate HIKING TRAIL (DIG) data, this data was captured off paper maps and will be replaced with more accurate GPS captured data when it becomes available, this is where your assistance could help to speed up this process.





10. And yes it works on 3D GPSr as well but I prefer the Topographical map for hike as a basemap.



11. You are more that welcome to contact me if you require further assistance, my contact details are in the install notes.

Thanks - Johan Cloete